



GAT MONTHLY MEMBERSHIP PROGRESS REPORT

Results as of: 4/30/2024

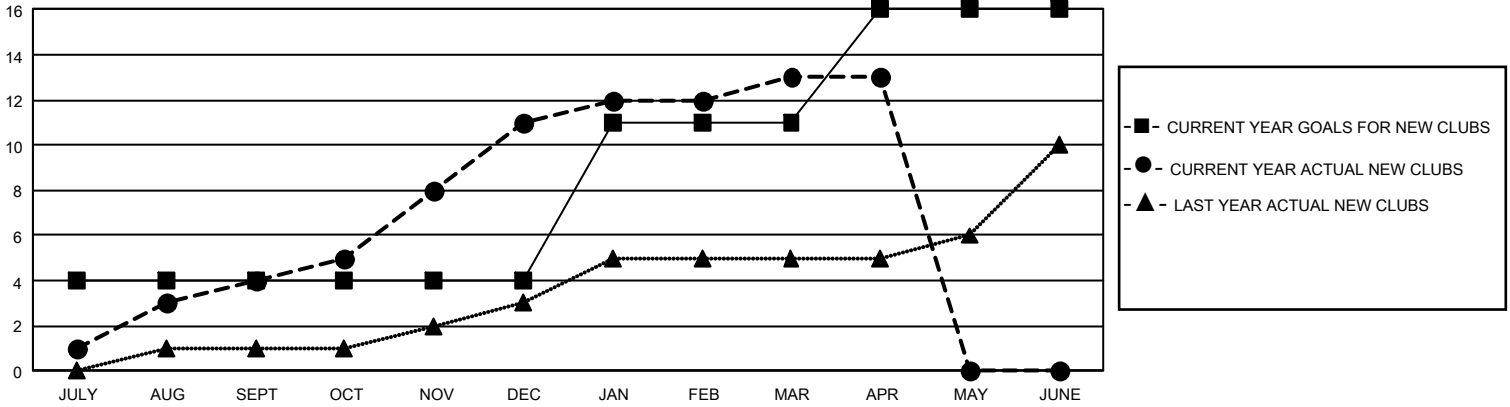
GMT Constitutional Area 8, Group D

REPORT DOES NOT INCLUDE CLUBS IN UNDISTRICTED AREAS.

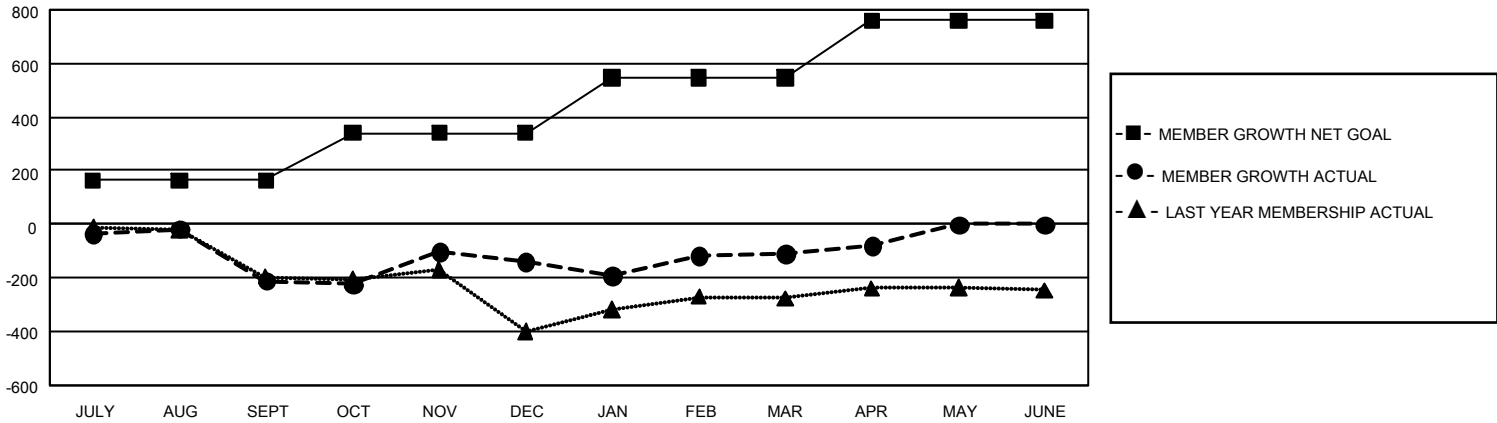
Clubs			
RESULTS FOR 2023-2024			
QUARTER	NEW CLUB GOAL	NEW CLUBS	DROPPED CLUBS
JULY/AUG/SEPT	12	4	2
OCT/NOV/DEC	0	7	5
JAN/FEB/MAR	21	2	5
APR/MAY/JUNE	15	0	0

Members			
RESULTS FOR 2023-2024			
QUARTER	MEMBER GROWTH NET GOAL	MEMBER GROWTH ACTUAL	DROPPED MEMBERS ACTUAL (including transfers)
JULY/AUG/SEPT	163	271	473
OCT/NOV/DEC	178	593	477
JAN/FEB/MAR	206	473	334
APR/MAY/JUNE	214	74	39

GOALS AND ACTUAL NEW CLUBS CUMULATIVE



GOALS AND ACTUAL MEMBERS CUMULATIVE



DROPPED CLUBS: 12	116 CLUBS OF 194 ADDED 1 OR MORE NEW MEMBERS	<u>GENDER DISTRIBUTION</u>	
<u>DROPPED MEMBERS</u>		MALE	1,546 (38.46%)
DECEASED	18	FEMALE	2,473 (61.52%)
CLUB CANCELLED	191	NON BINARY	1 (0.02%)
OTHER	1,114	PREFER NOT TO ANSWER	0 (0.00%)
TOTAL	1,323	TOTAL FAMILY UNIT MEMBERS	517
	CLICK HERE FOR CUMULATIVE MEMBERSHIP DATA	FAMILY MEMBERS PAYING HALF DUES	301